

TransEd LRT
VALLEY LINE

Community Update

Whitemud to Mill Woods



CURRENT AS OF
MARCH 2019

Visit transedlrt.ca for the latest updates

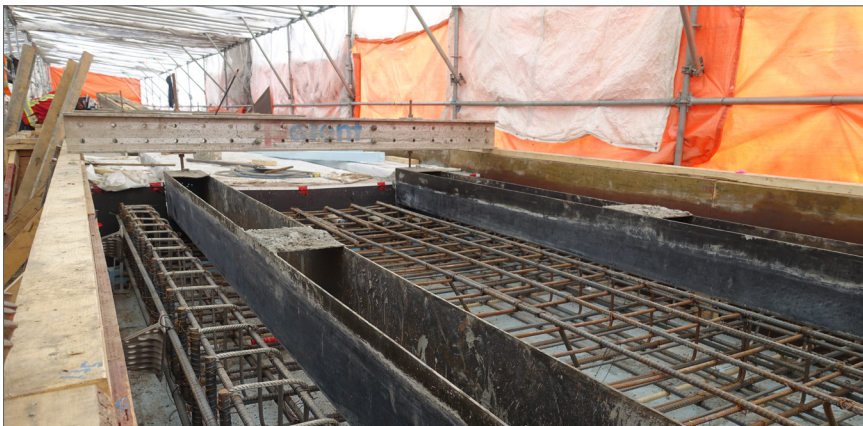
[f](#) [t](#) [i](#) @yegvalleyLRT

66 Street

- » Rail bed has been installed at all major intersections along 66 Street. These intersections include 38 Avenue, 36A Avenue, 34 Avenue, 31 Avenue, and 28 Avenue.
- » Light rail vehicle testing is expected to begin in multiple places along 66 Street in fall of 2019. The first area for testing will be 66 Street between Whitemud Drive and Roper Road.
- » 31 Ave is currently open in a temporary configuration. Final paving work and tie ins will be completed during the summer, allowing for full access at the intersection.

28 Avenue and 66 Street

- » A majority of construction activities are complete on the north side of 28 Avenue. Final sidewalk tie-ins and landscaping on this side will occur in 2020.
- » Drainage work on the south side of 28 Ave is nearly complete. Installation of duct bank and vaults for underground electrical components and communications will begin in the spring.
- » Traffic has shifted to the north side of 28 Ave to accommodate construction activities on the south side.
- » Westbound through traffic at 28 Ave and Hewes Way will be reinstated after paving is complete in the area. This is expected to occur in the summer.



Grey Nuns Stop - March 2019

Continuing Work

- » Remaining track slab installation will occur in areas along 66 Street.
- » Concrete spans for the Whitemud pedestrian bridge will be cast this spring.
- » Station platforms for the Millbourne and Grey Nuns stops are currently being formed. These will be poured later this season.

Progress Updates

- » Concrete spans for the Whitemud LRT bridge were installed in February.
- » Poles for the overhead catenary system (OCS) have been installed in many areas along 66 Street.



OCS Pole - March 2019



Installation of concrete spans at Whitemud - February, 2019